



WARNINGS



- Risk of electric shock - Disconnect power at the source before installation.
- If you are unsure about the installation or the maintenance of the fixture, please consult an electrician.
- Do not make or alter any holes in the wiring enclosure or modify any electrical components.

CAUTIONS

- The fixture must be wired in accordance with the National Electric Code (N.E.C) standards and any applicable local codes or ordinances.
- Supply conductors must at least be rated for 90°C/194°F.
- This fixture is designed for use with 120Vac, 50/60Hz only.
- Suitable for damp locations.

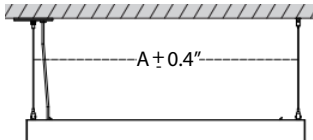
INSTALLATION INSTRUCTIONS

1. Ensure the power has been turned off by switching the circuit breaker to the off position or by removing the fuse from the fuse panel.
2. Using the CCT and distribution switches, preview and select CCT and light distribution, see figure 1.
3. Remove the mounting bracket from the round plate by unscrewing the cable support holder, see figure 2.
4. Secure the mounting bracket to the junction box using the supplied screws, see figure 3.
5. Remove the inner stopper from the cable support holder, figure 4.
6. Thread the cable through the inner stopper, to adjust the length of the cable, pinch the inner stopper between your index and thumb, refer to figure 5.
7. Use the supplied wood screw to secure the cable support holder to the ceiling, if necessary use the supplied anchor. Re-insert the inner stopper. If necessary, thread the extra cabling through the cable support holder, see figure 6. See chart 1 for recommended distance between mounting supports.
8. Using the supplied wire nuts, connect the black (hot) supply wire to the black (hot) fixture wire. Connect the white (neutral) supply wire to the white (neutral) fixture wire. Connect the green/bare copper (ground) supply wire to the the green (ground) fixture wire, see figure 7.
9. Tuck all wire connections into the electrical box, ensuring not are pinched.
10. Thread the cable through the metal stopper, then the round plate and finally the center screw on the mounting bracket. Thread the center screw through the round plate, keeping the cable tight. Align the center screw with the metal stopper and secure, figure 7.
11. Secure the metal fixaors to the back of the light using the supplied screws. Thread the cabling through the fixators and ensure cabling is secure, see figure 8.
12. Installation is now complete.
13. Restore power and check the operation of the fixture.

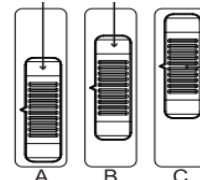
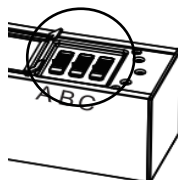
** follow instructions provided with dimmer switch.

Chart 1

Model #	'A' (inch)
MCL-224003	22.3
MCL-436003	46.3



CCT Switch for up or down light
3500/4000/5000K



Light Distribution
up: 100%, down: 0%
up: 70%, down: 30%
up: 50%, down: 50%
up: 0%, down: 100%

Figure 1

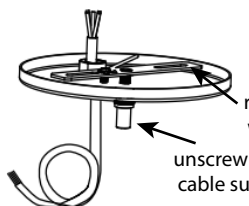


Figure 2



Figure 4

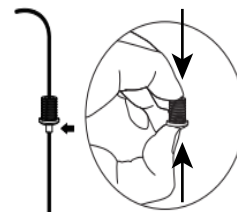


Figure 5

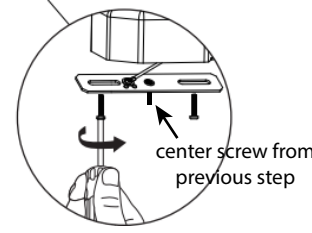


Figure 3

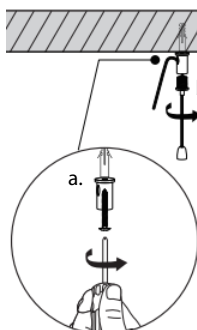


Figure 6

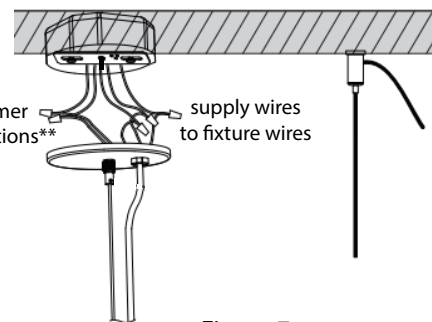


Figure 7

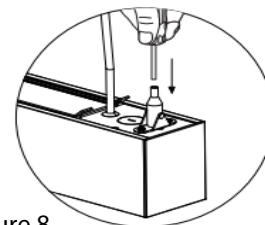
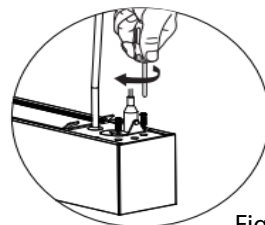


Figure 8

3 YEAR WARRANTY

Maxxima extends a 3 year limited warranty to the original purchase that the products listed are free from defects in material and/or workmanship only. Maxxima will replace any warranted product to the original consumer/purchaser if the product fails because of defects due to workmanship and/or materials within the limited warranty period. Limited warranty is not transferable and applies to the original installation of the Maxxima product. This offer does not constitute in any way a product guarantee and Maxxima does not hereby assume any obligation whatsoever beyond sending a free replacement product.