

Continental[®]

BATTERIES

DATA SHEET

31 SAB-HC

PART # 31SAB-HC
 BCI 31
 VOLTAGE 12V
 Ah 99



PHYSICAL SPECIFICATIONS

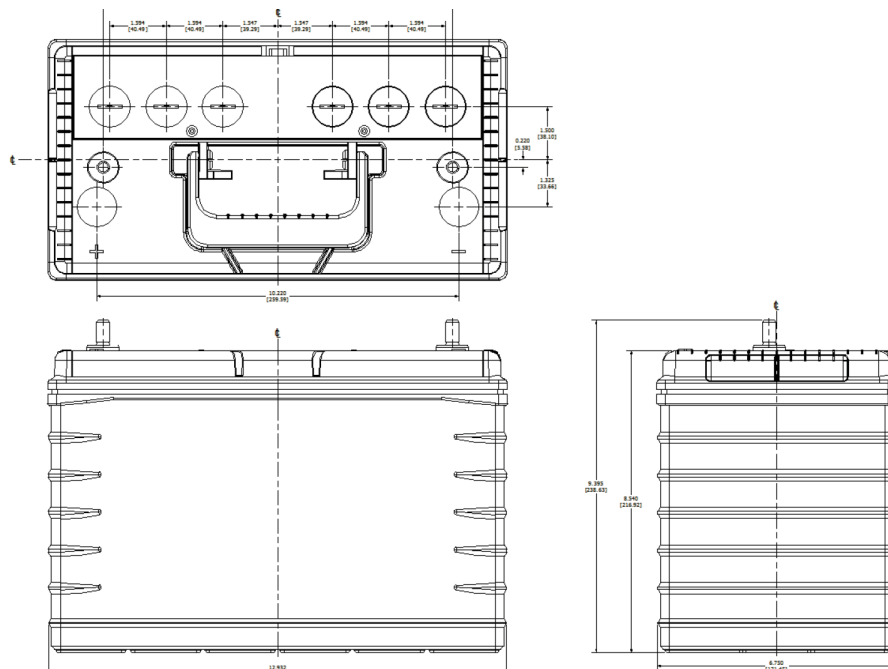
Battery Type	Weight	Dimensions (L x W x H)	Container Material	Cover Material	Separator Material	Handle Option
Flooded	58.35 lbs 26.5 kgs	12.932 x 6.75 x 9.4" 328.5 x 171.4x 238.8 mm	Polypropylene	Polypropylene	Polyethylene	Yes

ELECTRICAL SPECIFICATIONS

Nominal Voltage	SAE CCA (-18°C/0°F)	SAE CA (0°C/32°F)	SAE RC (27°C/80°F)	Ref. Ah Capacity 20 Hr	Battery Terminal Type	Electrolyte Specific Gravity Range
12.6 V	700 A	875 A	190 Min	99 Ah	Side Terminal Type S	1.270-1.300

MISC SPECIFICATIONS

Maximum Discharge Current	1000 A (5 sec)
Positive Grid Alloy	Lead Calcium Tin
Negative Grid Alloy	Lead Calcium
Terminal Polarity	+ -



WWW.GOCBS.COM

